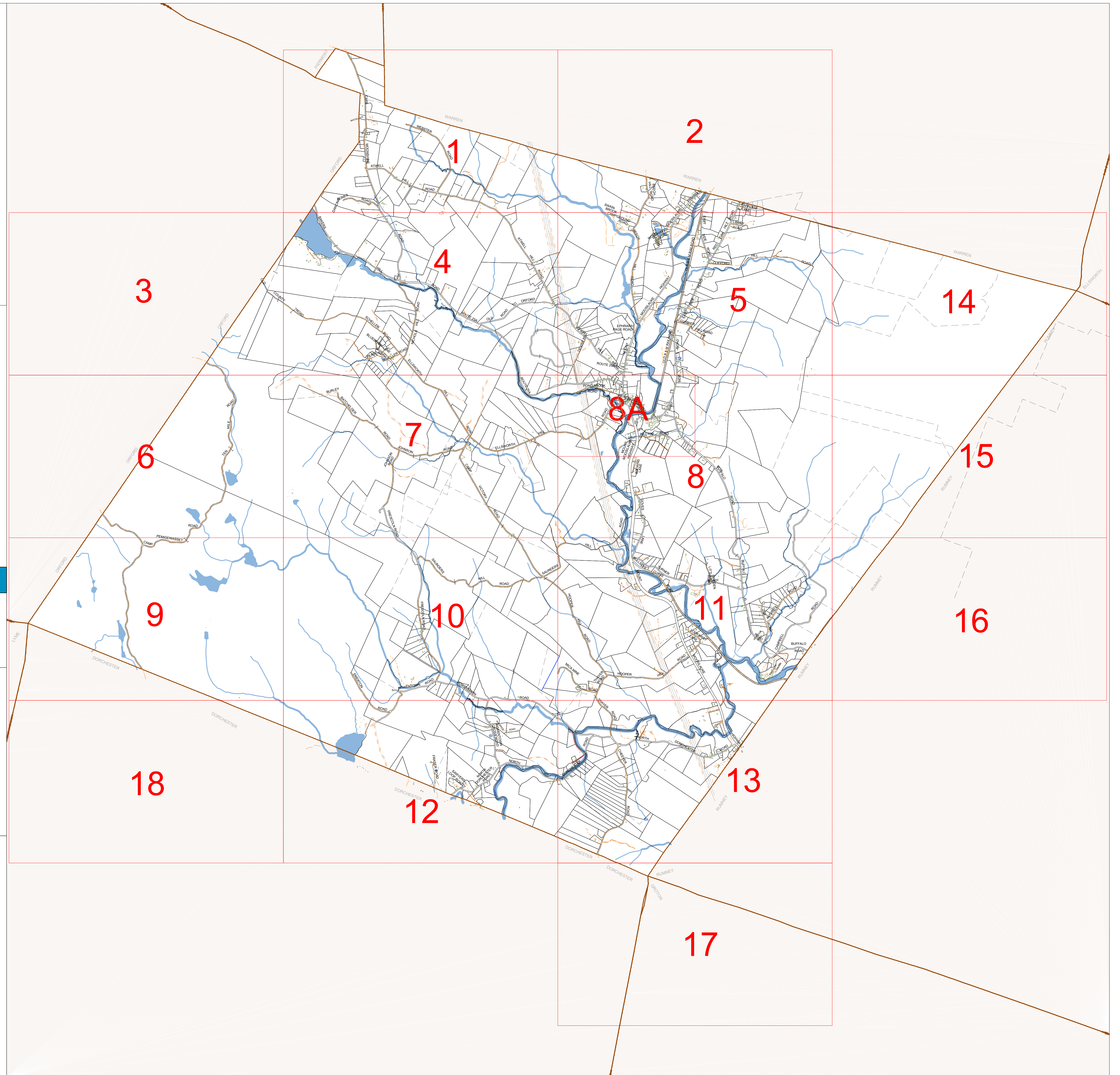


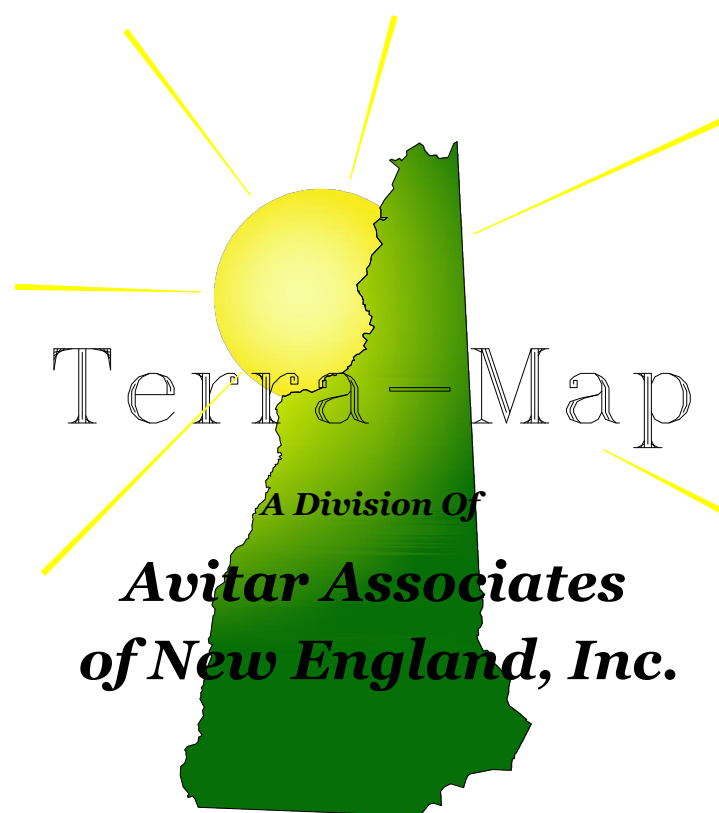
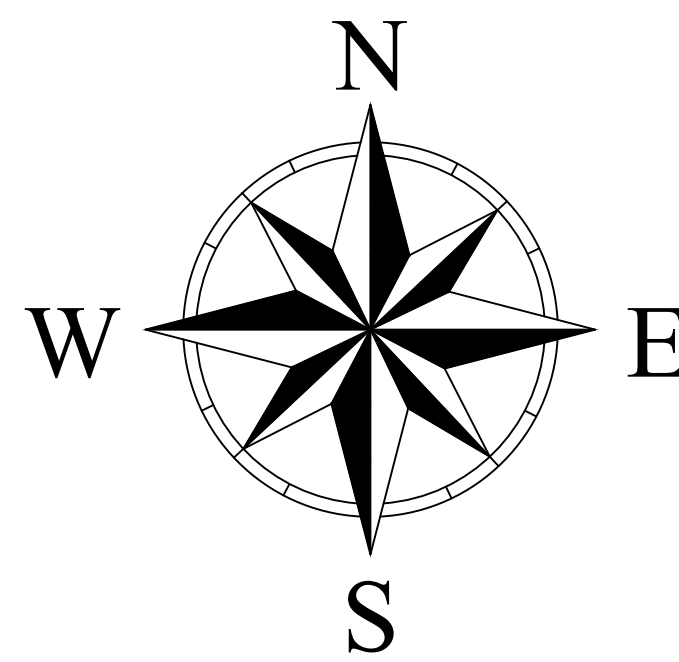
# Town of WENTWORTH

## Grafton County New Hampshire



### LEGEND

Parcel Number	1-22	Rivers & Brooks		Paved Road	
Parcel Acreage	12.1 Ac	Wetlands		Dirt Road	
Frontage/Dimensions	253.23	Lakes & Ponds		Stonewall	
Survey Number		Power Lines		Fence	
Common Property		Structures		Right of Way (ROW)	



Phone  
603 798-4419

Fax  
603 798-4263

www.avitarassociates.com  
Terramap@avitarassociates.com